

Pasadenian

1958

Vol. 20



pasadenian

Editor _____ DOYLENE BYRD

Business Manager _____ VONNIE SANDIFER

Sports ----- WARREN TYNER

Clubs _____ MARGARET BLYE

Seniors _____ BOBBIE ANCELL

Juniors ----- DIANA HENCKEL

JEANNE PAVEY

Sophomores ----- ANITA HEICHELBECH

ELINDA SMITH

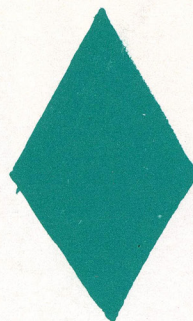
Photographer _____ FRANK YOUNG

Society _____ BETH CROCKER

Art _____ CHARLES CAPLINGER

Faculty Sponsor ---- MRS. HOLLIE B. KOEHLER

20th Volume



THE PASADENIAN 1958

PASADENA HIGH SCHOOL
Pasadena, Texas

Progress....

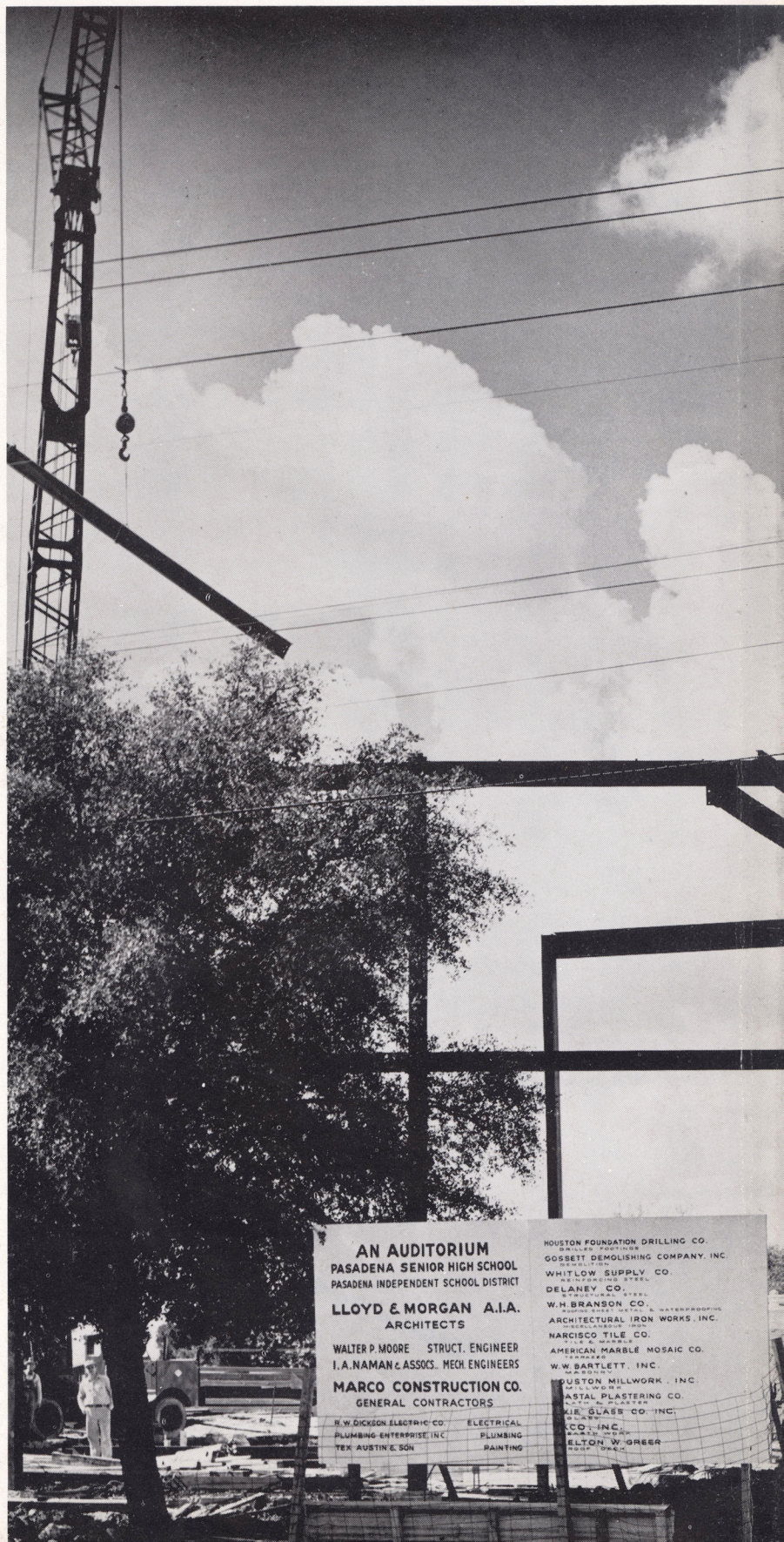
Life at Pasadena High School this year has been one of change, construction, and, we think, progress.

For six weeks we had the South Houston students on our campus while they waited for their new buildings to be finished. While they were here, just about everywhere you went, there was a crowd. We even held classes in the old Kruse elementary building and changed classes by traffic lights across Shaver street.

Construction on our campus caused our own students to walk around, behind, and over obstructions.

Our teachers had to talk above the noise of bulldozers, the rat-a-tat of an electric drill, and had to make classes so interesting that attention would stay inside, while outside an old landmark came down and a new one went up.

In this year the problems of growth have been faced realistically, and school has continued enthusiastically. We learned, and we had fun. May we point with pride to the school year of 1958?



AN AUDITORIUM
PASADENA SENIOR HIGH SCHOOL
 PASADENA INDEPENDENT SCHOOL DISTRICT
LLOYD & MORGAN A.I.A.
 ARCHITECTS
 WALTER P. MOORE STRUCT. ENGINEER
 I. A. NAMAN & ASSOS. MECH. ENGINEERS
MARCO CONSTRUCTION CO.
 GENERAL CONTRACTORS

R. W. DICKSON ELECTRIC CO. ELECTRICAL
 PLUMBING ENTERPRISE, INC. PLUMBING
 TEX. AUSTINE, SON PAINTING

HOUSTON FOUNDATION DRILLING CO.
 GOSSETT DEMOLISHING COMPANY, INC.
 WHITLOW SUPPLY CO.
 DELANEY CO.
 W. H. BRANSON CO.
 AMERICAN MARBLE MOSAIC CO.
 W. W. BARTLETT, INC.
 JUSTON MILLWORK, INC.
 ASTAL PLASTERING CO.
 AIR GLASS CO. INC.
 CO., INC.
 ELTON W. GREER

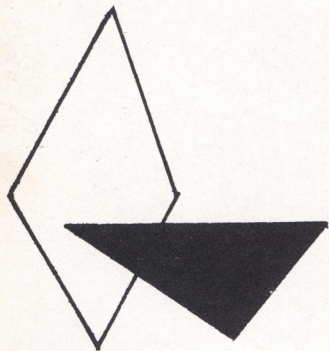
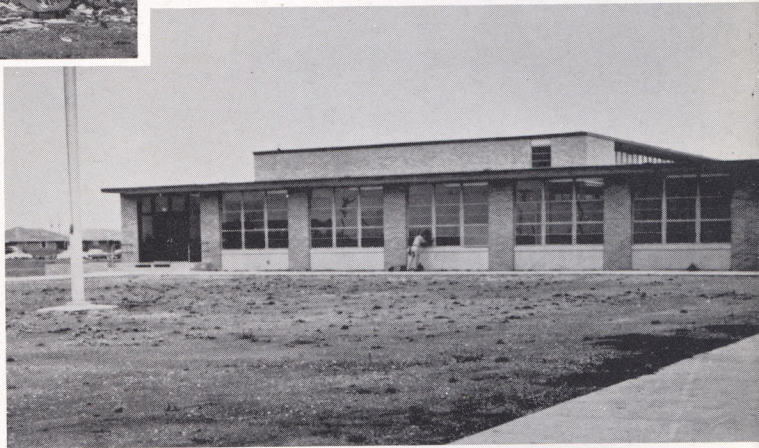


THIS WAS THE YEAR . . .



The old auditorium was torn down to make way for a new one.

A new high school was built and sophomore and junior classes were divided after the first six weeks of school.



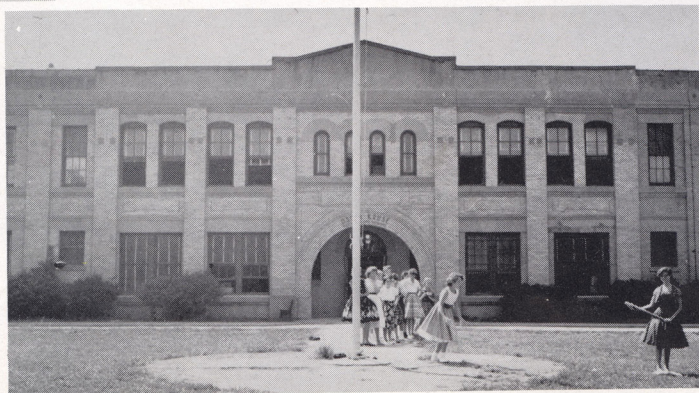
WE HAD 500 VISITORS



Some classes had to be held in nearby Kruse Elementary School.



Sophomores met in the Methodist Church for their first day of school assembly.

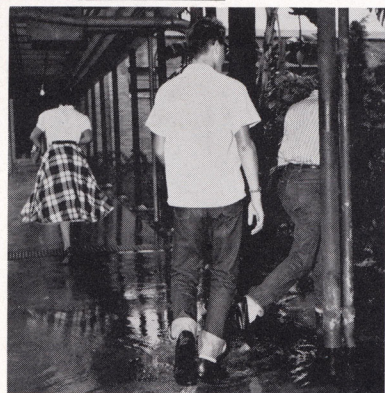


Additional stairways were built to speed up traffic.

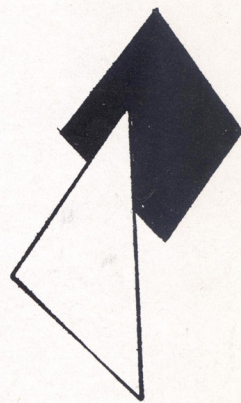
AND THE RAINS CAME



Special boardwalks had to be built.



School busses were used to taxi students to classes held in Kruse Elementary.



It was not unusual to find water standing on every corner.

AND THEN THE FLU . . .



Mrs. Osborne checks Penny Dickenson for traces of fever.

Sarah Murphy was one of the many victims of the flu epidemic which hit Pasadena High School.

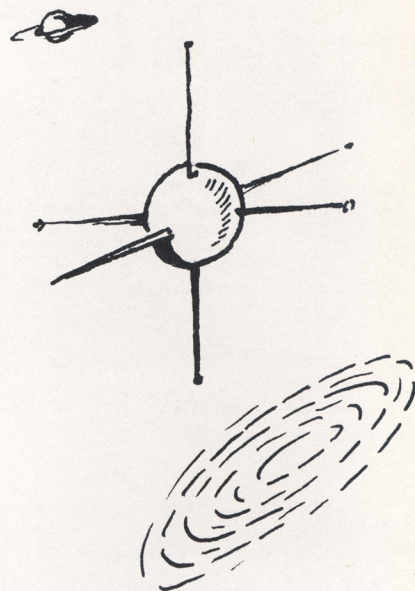


Sophomore, Judy White, waits for her mother to take her home. 5

WE READ THE LATEST HEADLINES . . .



Newspapers were full of talk about space travel and man made satellites. Donald Redwine, physics student, wonder what will happen next.



WE WORE THE LATEST FASHIONS...



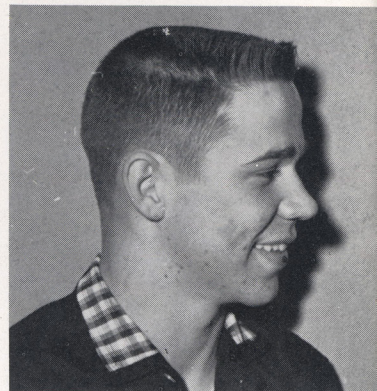
Ivy leagues were popular.



Girls went for short hair cuts and plenty of spit curls. "The more the merrier," says Sally ter Fehn.

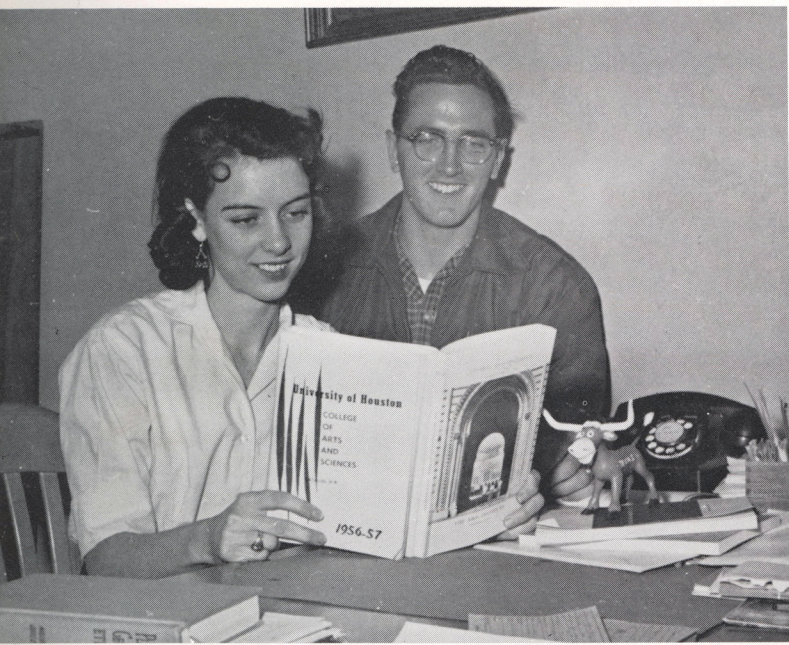


Black and white shoes called "bubbles" became popular with the girls.



The camera catches Billy Hale sporting his fashionable flat top.

WE PLANNED FOR OUR FUTURE . . .



Claudia Hammond and Glenn Anders look over college bulletins.

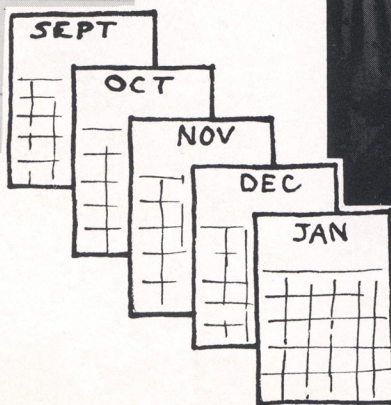


After graduation for some there will be wedding bells.

THIS WAS OUR YEAR AT P.H.S. FROM REGISTRATION . . . TO GRADUATION

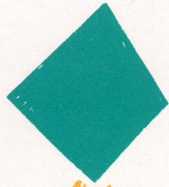


Seniors, David Powitzky, Barbara Harrell, and Linda Harrell register for fall classes.



Doylene Byrd, Bobbie Ansell, and Charles Caplinger are measured for caps and gowns.

CONTENTS



PERSONNEL 10

Administration



PEOPLE AND PLACES36

Activities



POLITICS AND POW-WOWS ..50

Organizations



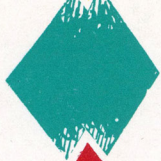
PORTFOLIO 90

Sports



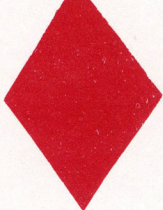
PERSONALITIES123

On Our Campus



POPULATION146

Classes



PUBLICITY 264

Ads and Snaps



